



CAMPUS AND INFRASTRUCTURE

Fifteen Departments are spread over a considerably large premises comprising of two three storied and one two storied buildings. The three storied buildings are under the academic wing and the two storied building is under the administrative wing. Five Science departments present are Physics, Chemistry, Mathematics, Economics and Geography. Among the Social Sciences there are Sociology, Political Science, History and Education. In the language group, there are the Departments of Bengali, English, Urdu, Persian and Arabic. There is also a separate Commerce Department offering Core Courses.

The premises is divided into three distinct blocks. The Administrative Block consists of the Principal's office, the admission enclave, student's section, main Staff-room, and Seminar Hall.

The Principal of the College is the administrative Head of the Institution. The working hours of the office are from 10:00 A.M. to 05:30 P.M. Visiting hour at the Principal's office is from 11:00 A.M. to 12:00 noon on any working day. The office remains open during summer and Puja vacations except on designated holidays, Saturdays and Sundays.

24 hours Security Service

- ✚ The college offers 24 Hrs. security services hiring two security guards at the entry gate with intercom facilities. There is a log book to record the entry and exit of the visitors in the college.

Fire Extinguishers

- ✚ The college has fire extinguishers installed at different points as safety measures

CCTV Surveillance

- ✚ The college provides the facilities of CCTV surveillance at different major points of the campus for continuous monitoring

College Canteen

- ✚ Food is available to the student at a subsidized rate from a newly constructed permanent student's canteen. Students canteen is there at the back of the administrative wing

Hostel Facility

- ✚ There is hostel facility available in the College on shared basis with Jyan Ghosh Polytechnic College .15 seats are reserved for the college students in the hostel.

Staff Quarter

- ✚ The college has four staff quarters at the back of the administrative wing within the campus spread within two adjacent buildings besides the college canteen

Central Library

- ✚ A spacious Central Library is present in the first floor of the Academic Wing with a good many number of books in different subjects. There is a spacious reading room for all with air conditioning facilities In addition to the Central library, each Department has its own Seminar Library as well. The academic block consists of the Departments, Laboratories, Computer Lab and the Class- rooms. The College has forty-nine spacious classrooms spread over the three floors of the Academic block

Computer Laboratory

- ✚ A separate computer laboratory is there in the first floor with 30 computers to facilitate students of various departments . The students of departments like Geography, Commerce, Education , Sociology all use the computer Lab on shared basis .

Lecture Theatre Halls and Seminar Hall

- ✚ The college has two lecture theatre halls with LCD projectors mounted at the wall and a good sound system. The college has one spacious seminar hall at the ground floor in the administrative wing.

IT Infrastructue and ICT Enabled Rooms

- ✚ Government Girls' General Degree College, Kolkata offers high-profile, prominent IT infrastructure for all students. ICT enabled services are not only present in departmental classrooms of Physics, Chemistry, Mathematics, Geography, but also in 2 Lecture Theatre Halls of the college. These services are solely available to aid the pupils in their scholastic and intellectual development. Apart from these, 68 desktops are allotted to 15 departments and computer laboratories of the institution. Among them, 55 desktops are conveniently accessible to students. The library is provisioned with 1 desktop for students and 1 more computer for teachers

Spacious Well Equipped Laboratories

- ✚ The College has spacious laboratories for the departments of Physics , Chemistry and Geography with adequate number of instruments and apparatus . The Mathematics and Physics have departmental computer laboratories for enrolled students.

Girls' Common Room

- ✚ In addition to the above the college has a spacious Common Girls' room in the ground floor with indoor sports items like carom board, chess, word-making games like scrabble and gymnasium item spike wheel cycle. .

Medical Unit

- ✚ A medical unit with a separate room is also present in the ground floor of the administrative wing to provide emergency medical services. The room is equipped with a sick bed, a stretcher, a wheel chair, first aid box, blood pressure monitoring device (stretcher, wheel chair and Blood pressure measuring device have been funded by NSS Unit I of the college) .

Barrier Free Disabled Friendly Environment

- ✚ The College offers a barrier free disabled friendly environment where ramp is provided at the entry gate, wheel chair is available and disabled friendly toilet is present in the ground floor. There is ample space in the front to park vehicles.

Cheap Store

- ✚ The college has a cheap store in the first floor at the administrative wing to provide contingency and other study materials at cheap rates to the learners.

Outdoor Indoor Sports Facilities

- ✚ The College has spacious parking lot at the front of the main entrance with a parking shade for vehicles.

Water Cooler

- ✚ The college has three water coolers installed at three floors for the use of all stakeholders .

Sanitary Vending Machine

- ✚ The college has sanitary vending machines for emergency use by the students and other lady stakeholders of the college

CESC Power Grid Supply Unit

- ✚ The college has a CESC power grid supply unit for the entire area within its premises for the whole Mominpur area

Installation of Solar Photo Voltaic Panel at The Roof Top

- ✚ The college has also taken initiatives to install solar photovoltaic panel at the rooftop as a measure towards energy conservation. To save energy , further initiatives have been taken to replace the ordinary bulbs and tubes with the CFL lights at different points of the college campus.

Xerox Facility

- ✚ The college has arrangement of Xerox facilities in the College Office, Central Library and in the cheap store

Waste Management

- ✚ The college has taken initiatives to maintain separate waste bins of different colours – Red, Green, Blue, Yellow for different kinds of wastes generated in the college campus. There is also a separate E-waste corner in a separate room at the 2nd floor of the academic wing



Administrative Wing of the College



Academic Wing of the College



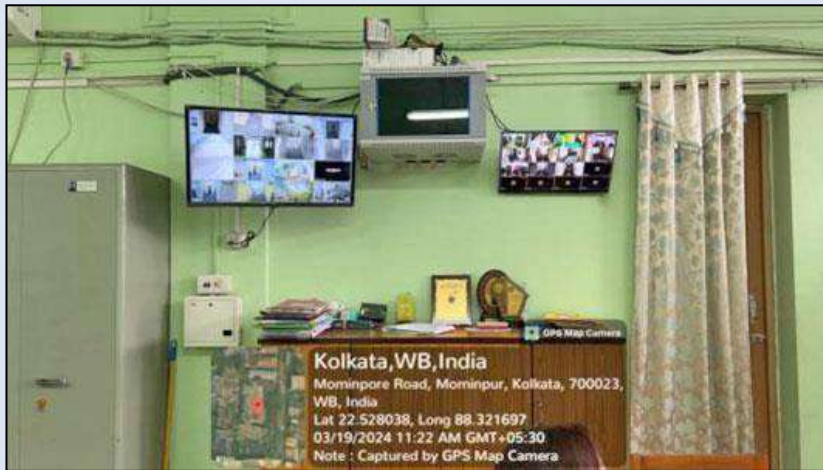
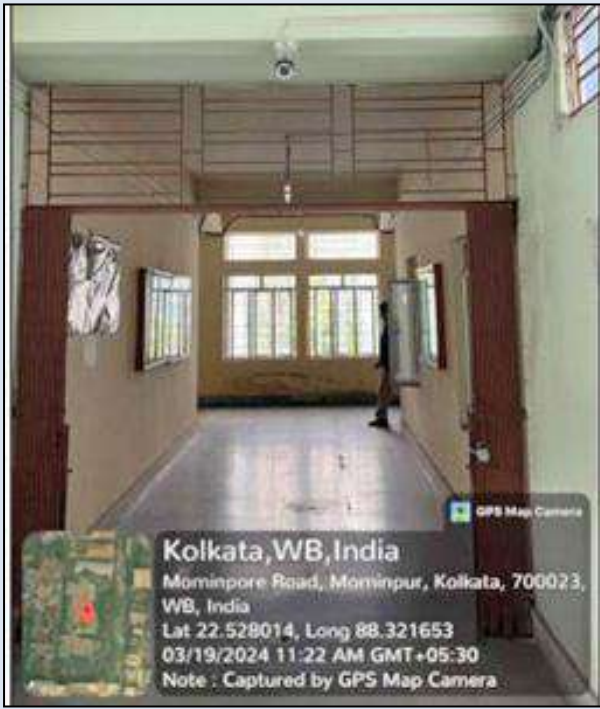
Back Side of the College



24 hrs. Security Service at the Front Gate



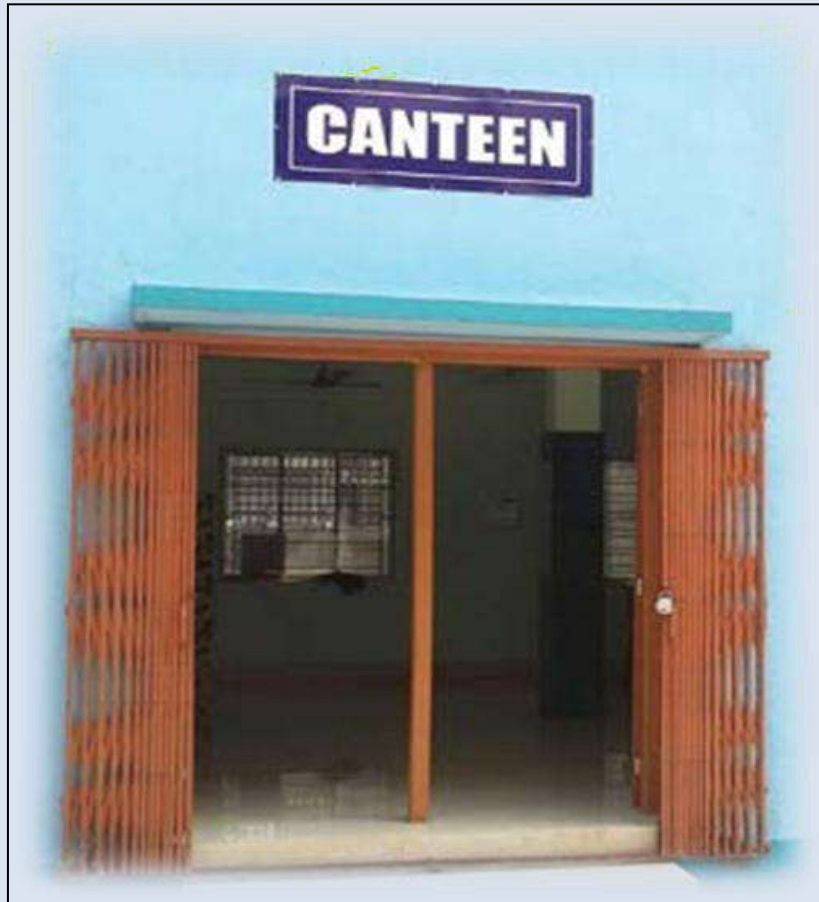
Security with Intercom Facilities at the Entrance



CCTV Surveillance at the corridor, in front of Seminar Hall , at the Principal Room



Fire extinguishers mounted at the walls



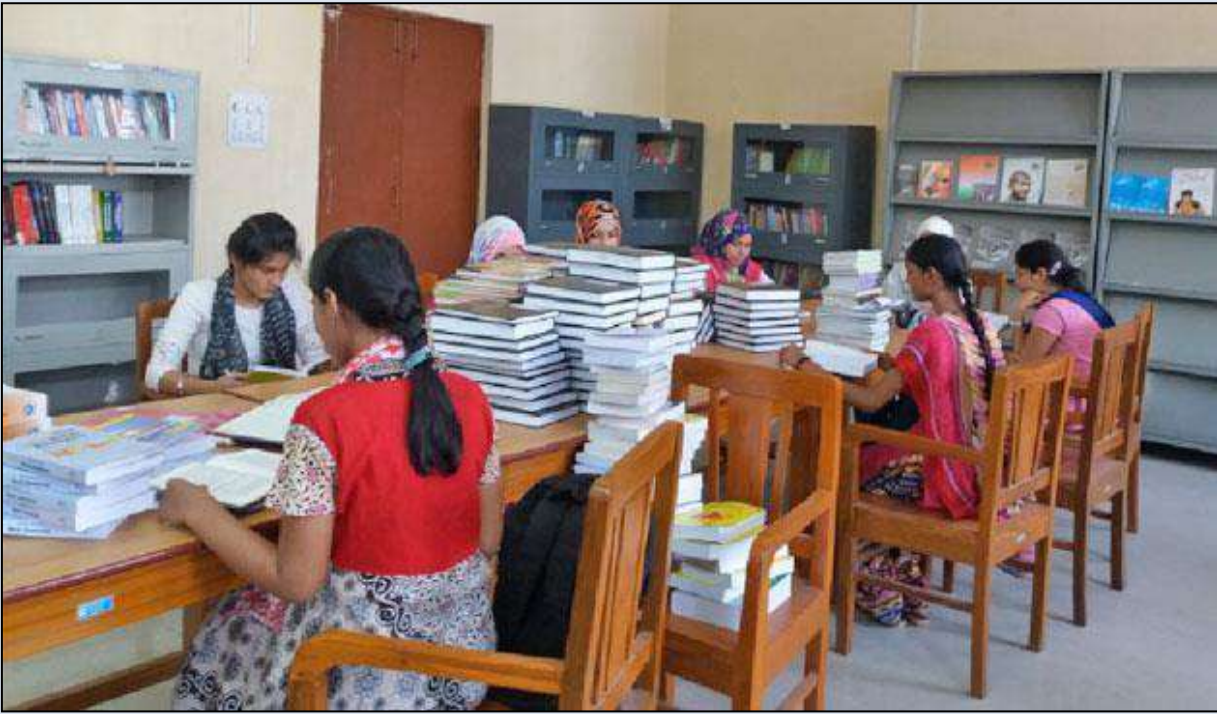
College Canteen



Way To the College Hostel



Staff Quarters at the back side of the Campus



College Central Library



Magazine and Journal Corner



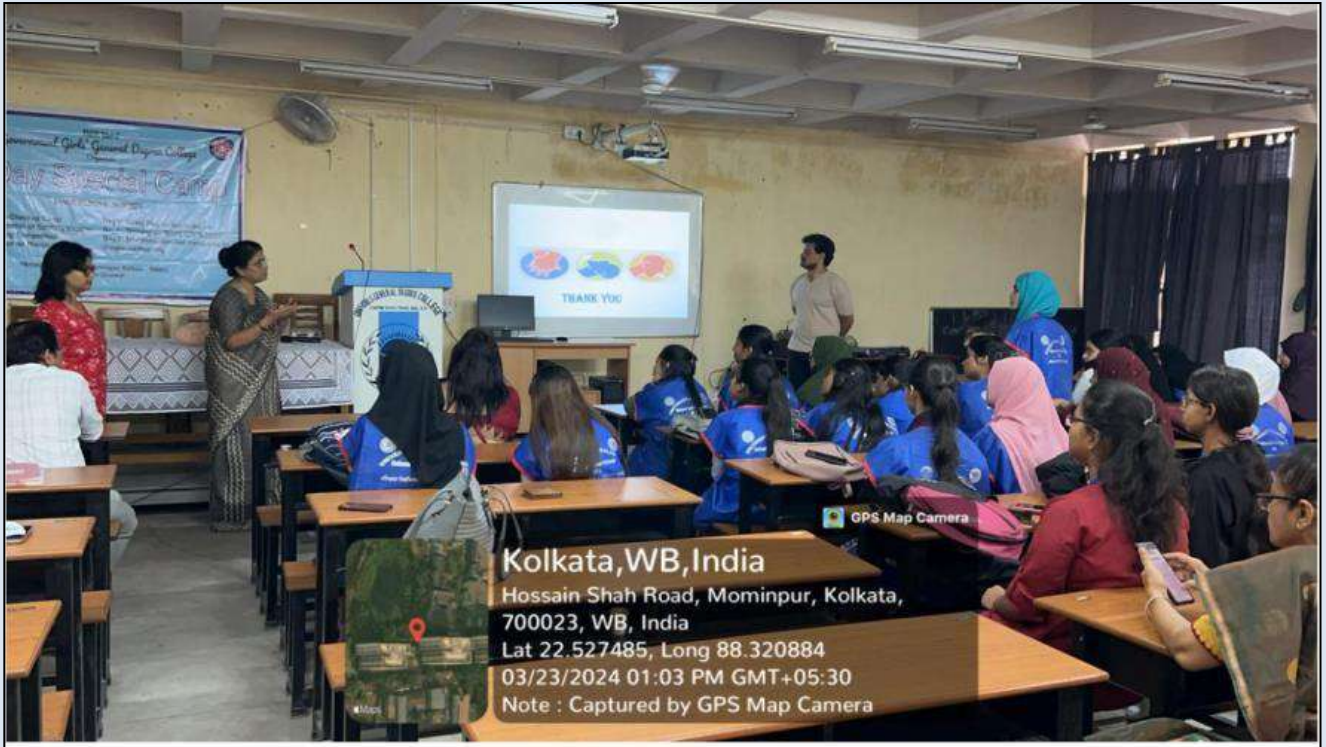
College Computer Laboratory



Physics Computer Lab



Computer in the Central Library



Lecture Theatre Hall - 2 at the First Floor



Seminar Hall at the Ground Floor



Physics Department



Geography Department



Mathematics Department

ICT enabled classrooms



Chemistry Department



Chemistry



Physics



Geography



Science Laboratories



Girls' Common Room in the Ground Floor with Indoor Sports Facilities



Medical Room



Stretcher



Sick Bed



First Aid Box



Blood pressure Measuring Device



Ramp at the Entry Gate



Wheel Chair



Divyangan toilet

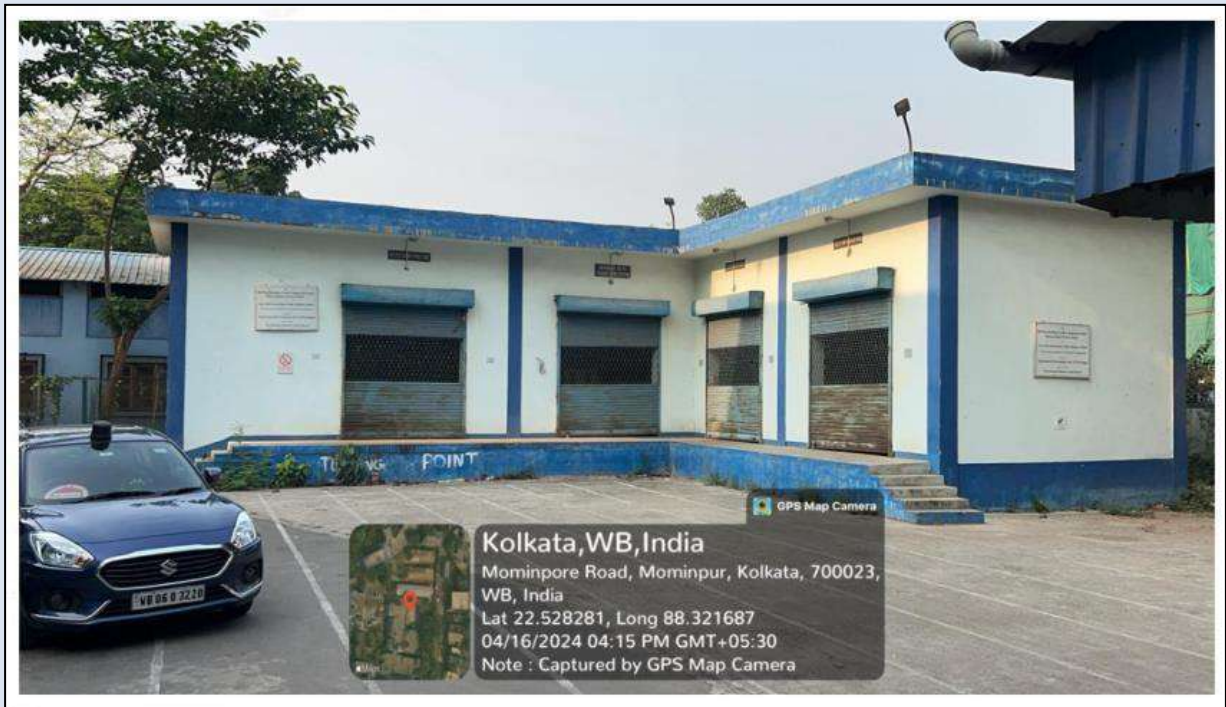


College Cheap Store at the First Floor



Water Cooler

Sanitary Vending Machine



CESC Power Grid Unit In The Campus



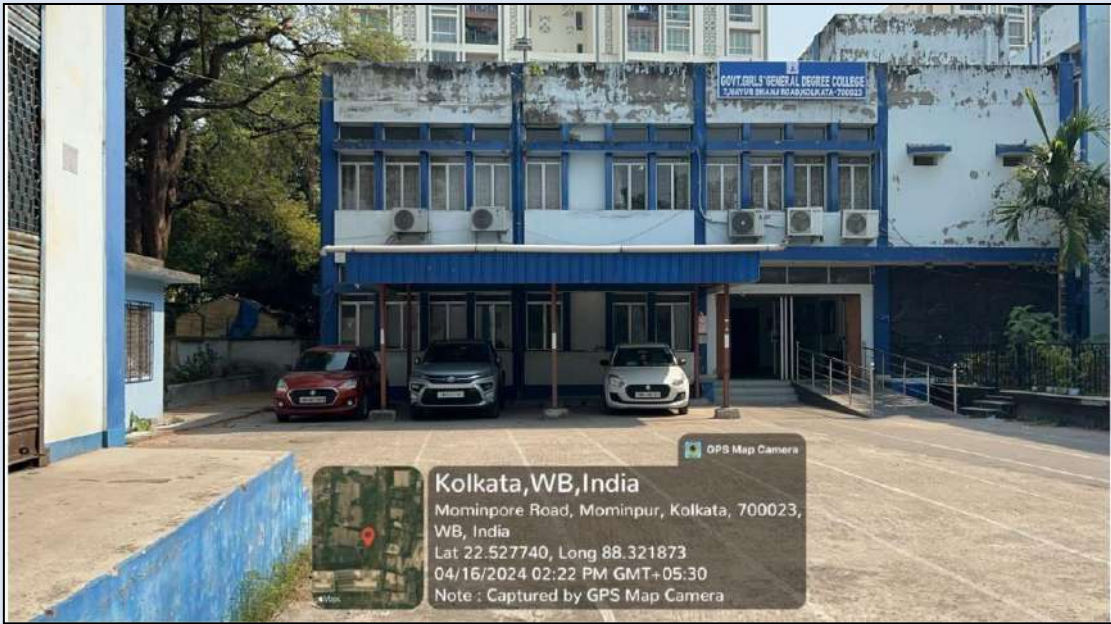
Solar Photo Voltaic Panel installed at the roof top



XEROX Facilities at the College Office, The Central Library and the Cheapstore , and



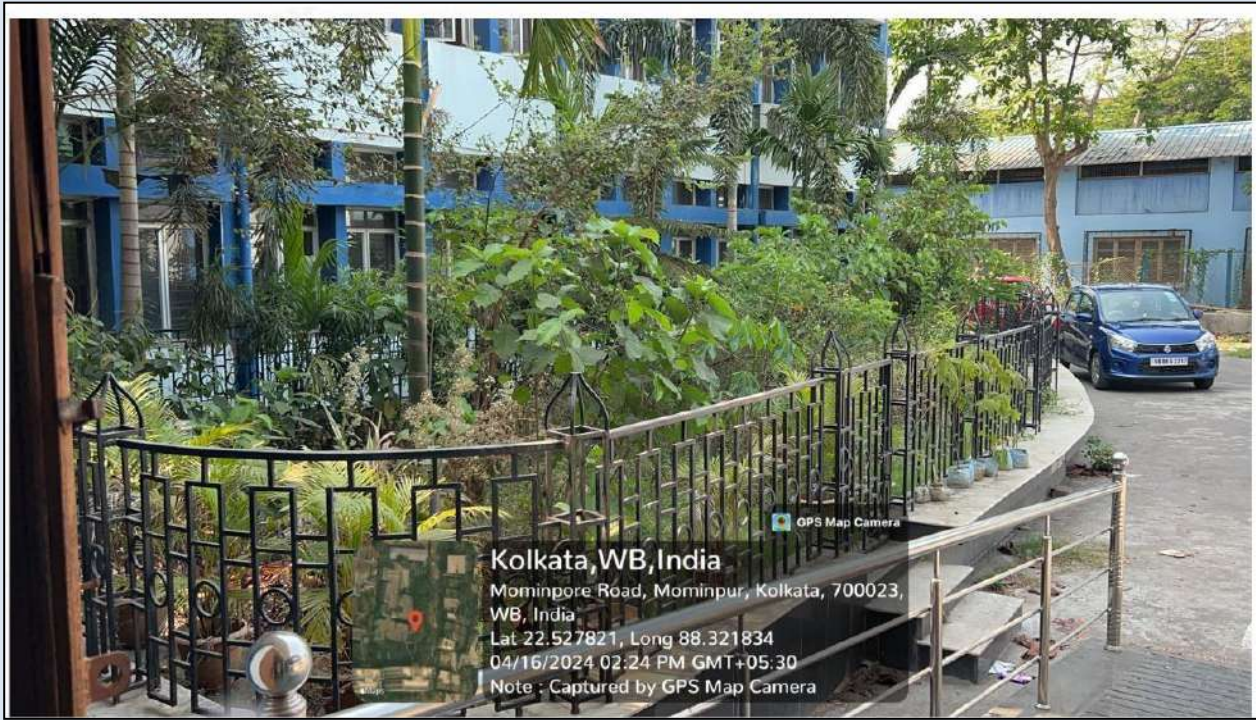
INTERCOM facilities in the college Office and Common Staff Room



Parking Lot at the front of the Administrative Wing with Shade



Parking Lot at the front of the Academic Wing without Shade



A small green enclosure with few Herbal Plants



Waste Disposal Cans for different kinds of wastes generated



E-Waste Disposal Corner